



Biodiversity Strategy

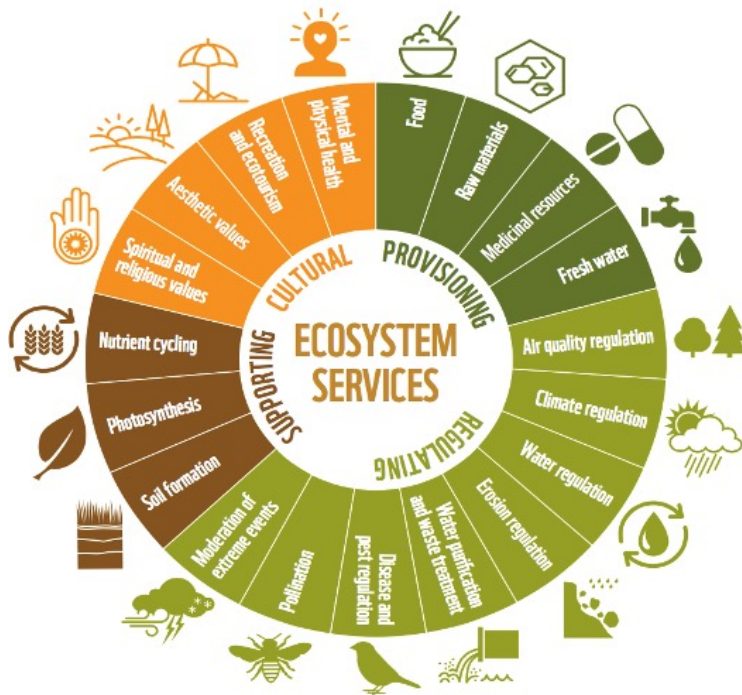
Basingstoke Area Sustainability Network Meeting

4pm 11th July



Basingstoke
and Deane

Introduction - Context

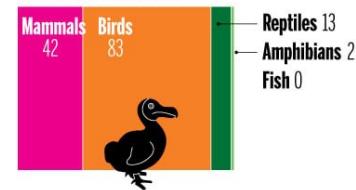


Source: WWF Living Planet Report 2016

EXTINCT VERTEBRATES, 1500 TO PRESENT

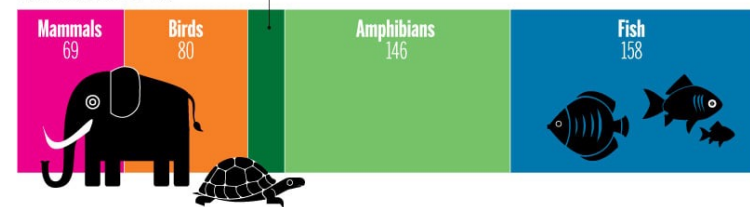
1500 TO 1900

EXTINCTIONS: 140



SINCE 1900

EXTINCTIONS: 477



SOURCE: Ceballos et al. Sci. Adv. 2015;1:e1400253 | GRAPHIC: Amanda Shendruk

MACLEAN'S



Basingstoke
and Deane

Introduction - Context

- **Ecological Emergency** – councillors unanimously supported a motion to declare an ecological emergency for the borough at a meeting of full council on 14 October 2021.
- **Enhanced biodiversity duty** - the Environment Act 2021 strengthened the 'biodiversity duty' on the council. The council must, from time to time, consider what action the authority can take to further the objective of conserving and enhancing biodiversity. The first consideration of what action the authority can take to meet this duty must be completed by January 2024. 5 yearly reporting cycle on progress also required.



Basingstoke
and Deane



Basingstoke
and Deane

Introduction - process



- **Biodiversity Strategy Working Group** – Portfolio Holder, Champion and officers
 - **Stakeholder workshop** - Hampshire and Isle of Wight Wildlife Trust, National Trust, North Wessex Downs National Landscape, Test and Itchen and Loddon Catchment Partnerships, Natural England, Environment Agency, Forestry England, Manydown, Natural Basingstoke and Greener Basingstoke.
-
- **Community Conservation group questionnaire** - 48 responses
 - **Internal consultation** - Grounds Maintenance, Ranger Services, Development Control, Planning Policy, Property and Assets, Community Services, Wellbeing, Equality, Diversity and Inclusion, Regeneration, Climate Change, Landscape, Trees
 - **CEP - 15th November 2023 & 17th January 2024** – Officers presented the process and scope, updating the committee on work completed to date and sought input.



Basingstoke
and Deane

Principles, Objectives, Priorities

Principles – how we will proceed and show a clear commitment to delivering one of council's top priorities

The Objectives – Working with partners and the public has enabled us to develop a list of objectives that will guide us moving forward. In achieving these objectives, we hope to help halt the decline of wildlife in the borough and start to restore nature. They are framed by:

- **What we must do**, for example, legislative requirements and statutory functions;
- **Where we have direct control**, for example, where we have dedicated resource and influence such as through our policies and on the land we own, manage and maintain; and
- **Where we can lead, enable and inspire**, for example, where can we look for additionality and work with partners, and encourage residents, businesses and organisations to take action to support and enhance the natural environment and biodiversity.

Priorities - in order to focus our efforts, we have identified a set of priority species, habitats and spatial areas which will guide and shape our project and partnership work. The priorities will be captured in summary sheets, currently in draft.



Basingstoke
and Deane

1. Playing to our strengths and focusing our effort where we can make the most difference.
2. Working in partnership with individuals, organisations and communities.
3. Take account of the ecosystem services provided by nature.
4. Maximising co-benefits with climate change.
5. Ensuring alignment with other internal policies and strategies, especially working closely with the Climate Strategy and the Climate Team.
6. Being innovative and bold in our actions.
7. Being an exemplar landowner and be visible where we take action.
8. Empowering staff and volunteers.
9. Ensuring past learnings inform our future.
10. Setting clear measures of success with targets, frameworks and timeframes.
11. Limiting exclusion of any groups.
12. Ensuring we promote equality, diversity and inclusion through our strategy
13. Communicate with intention to the right audiences.



A wide banner featuring a dense collage of green icons representing various environmental and sustainability themes. The icons include renewable energy sources like wind turbines, solar panels, and lightning bolts; nature elements like trees, leaves, butterflies, and fish; urban development symbols like buildings and houses; and sustainability concepts like recycling, water drops, and light bulbs. The background is a light green with a subtle pattern of small dots.

The table below lists the priorities and identifies their value and which group of objectives they are aligned with.

	Type of priority							Objectives		
Priority	Indicator species	Charismatic species	Keystone species	Locally significant species	Direct influence	Habitat	Spatial priority	Supporting what we must do	Supporting where we have direct control	Supporting where we lead, enable and
River flies	X		X	X	X				X	X
Lepidoptera (butterflies and moths)	X		X	X	X				X	X
Herpetofauna (amphibians and reptiles)	X		X	X	X		X	X	X	X
Rare arable flora			X	X			X	X		X
Bats	X		X		X			X		
White & violet helleborine	X		X	X	X			X	X	
Swifts	X		X		X			X		
Barn owl			X		X			X		X
Dormouse	X	X	X	X	X			X	X	X
Hedgehog	X	X	X						X	X
River Test (including winterbournes)			X			X	X	X		X
River Loddon			X			X	X	X	X	X
River Enborne			X			X	X	X		X
The North Wessex Downs National Landscape and its chalk grassland			X			X	X	X		X
Northern heathlands			X			X	X	X	X	X
Meadows and neutral grassland			X			X		X		X
Woodland, wood pasture, trees and scrub			X			X		X	X	
Hedgerows			X			X		X		
Accessible natural greenspace						X			X	X
Designated sites						X		X	X	
Verges and open space						X			X	X



Basingstoke
and Deane

Our headline actions include:

1. The creation of a nature partnership for the borough to help jointly take action for the restoration of biodiversity.
2. Delivering nature plans for our strategic allocations, strategic gaps and surrounds.
3. Embedding Biodiversity Net Gain and maximising its potential including supporting the enhancement and creation of habitats in the borough to supply units for developers.
4. Develop an internal and external engagement plan to help us target engagement and empower staff, volunteers and residents.
5. Explore opportunities across our estate to undertake enhancements for nature and people.
6. Continue to work closely with Natural Basingstoke and other community partners in the management of the estate and for other opportunities.
7. Develop and support garden advice and community champions in partnership with the Wildlife Trust.
8. Prepare monitoring plan to assess our progress and to inform our effort

